



Swann[®]
Advanced Security Made Easy

Day & Night PTZ Dome Camera

For use with Swann 4400 Series HD DVRs

INSTRUCTION MANUAL

EN

Introduction

Congratulations on your purchase of this Day & Night PTZ Dome Camera. A state-of-the-art high resolution camera with 10x optical zoom. The camera can pan a full 360 degrees and can focus on key locations with multiple pre-set viewing points. The 720p resolution is perfect for close up detail such as license plates, facial detail, and more. With the latest infrared cut filter, it has amazing night vision to 196ft/60m and excellent clarity in low light. It's ready to go with a pre-installed mounting bracket.

Important note - All jurisdictions have specific laws and regulations relating to the use of cameras. Before using any camera for any purpose, it is the buyer's responsibility to be aware of all applicable laws and regulations that prohibit or limit the use of cameras and to comply with the applicable laws and regulations.

Important safety instructions

- 1)** Make sure the camera is fixed correctly and stable if fastened in place.
- 2)** Do not operate if wires and terminals are exposed.
- 3)** This camera can only be used in combination with Swann's DVR4-4400, DVR8-4400 or DVR16-4400 digital video recorders.
- 4)** Only use the supplied power adapter (24V).
- 5)** Do not manually pan and tilt the camera when it is turned on.
- 6)** Use a small flat-head screwdriver to connect the PTZ module that is attached to the rear of your DVR, to the red and black PTZ wires on the video & power cable.

Warning - Modifications not approved by the party responsible for compliance could void user's authority to operate the equipment.

Choosing a location for your PTZ Camera

With a PTZ camera, you have some flexibility on where the camera can be mounted. Some things to consider when choosing a location -

- 1)** What you want to monitor and where you'll get the best view of it.
- 2)** How you're going to connect the camera to your DVR; remember that cables and connections should be kept out of the weather.
- 3)** It's recommended to mount your cameras at an elevated position to keep out of harm's way.
- 4)** Make sure your camera has minimal sky in it as the light in daylight can make the foreground of the image darker.
- 5)** Think about the most likely way a potential offender may approach your home.
- 6)** The camera's casing is resistant to water and tampering. However, the cable and connector are vulnerable and require protection.

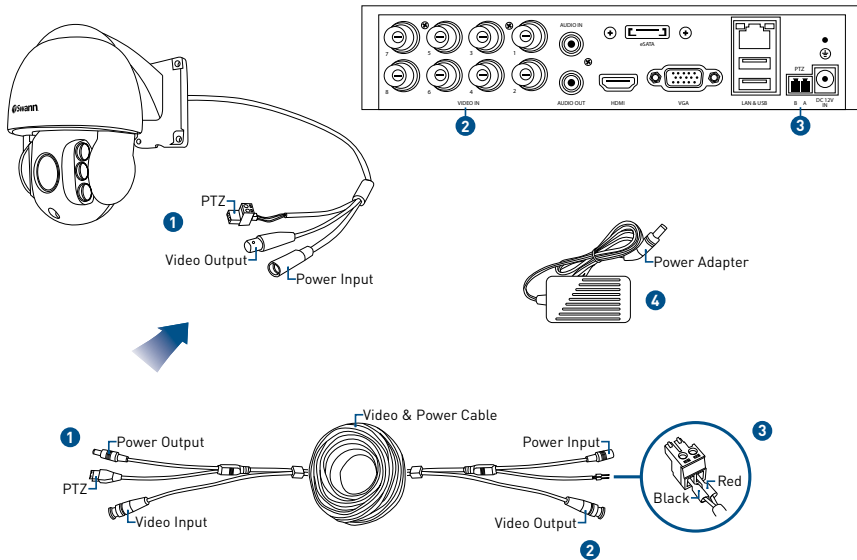
7) Prolonged exposure to adverse weather conditions such as sunlight or excessive moisture, may eventually damage the internal components of the camera and adversely affect its performance.

8) When running your cable, try to avoid bending it at sharp angles.

9) Don't put your cable near live electrical wiring. AC electricity generates radio "noise" which can interfere with the signal from your camera.

10) As the camera can pan a full 360 degrees, this means that (for example) installing it in a tight corner is probably not an ideal utilization of its potential. A freestanding pole of sufficient height and integrity to reliably hold the camera securely is an ideal choice, as is the centre of a wall in a larger room or a warehouse.

Connecting your PTZ Camera



Connecting your PTZ Camera (cont.)

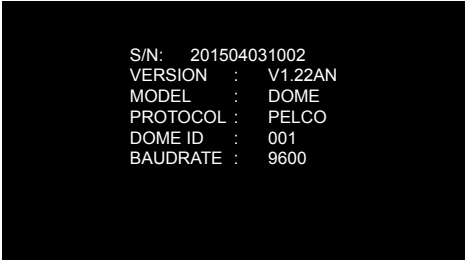
1) Connect the PTZ connection on the camera to the PTZ connection on the video & power cable (the connection is keyed so it connects in one orientation). Connect the video output and power input on the camera to the corresponding connections on the video & power cable.

2) Connect the video output on the video & power cable to a spare video input on the DVR.

3) Disconnect the PTZ module on your DVR. Using a flat-head screwdriver, attach the PTZ wires (red & black) to the PTZ module. The red cable connects to "A" and the black cable connects to "B" (as illustrated). Ensure the wires are held firmly then tighten (don't use too much force). Reconnect the PTZ module to the DVR when finished.

4) Connect the power input on the video & power cable to the provided power adapter. Connect the power adapter to a spare power connection.

When the camera is turned on, it will initialise a self-test then display some information about itself on-screen -



```
S/N: 201504031002
VERSION : V1.22AN
MODEL   : DOME
PROTOCOL : PELCO
DOME ID  : 001
BAUDRATE : 9600
```

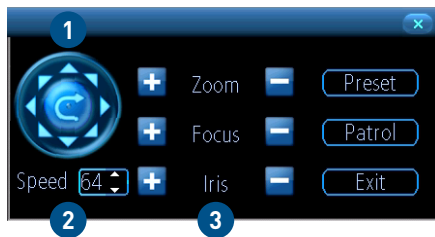
The DVR's default PTZ settings should allow you to use the camera without any configuration. However, there are many options that can be accessed using the DVR's menu as well as the on-screen menu on the camera. Download our comprehensive user manual available at our website.

Mounting & controlling your PTZ Camera

The PTZ camera can be mounted onto a flat surface using the supplied mounting hardware. Materials such as hardwood, brick or concrete are good options, and we've included all the gear you'll need for mounting.

- 1) Position the camera in the location you want to mount it. Make sure the location is rigid to prevent vibration.
- 2) Using a pencil or felt tip maker, mark the 4 screw holes on the surface to position the screws.
- 3) Using the appropriate screws for the surface you're fixing the camera to, screw the camera into place. Make sure the camera's bracket is aligned straight, otherwise the image on the DVR will appear on an angle.
- 4) For wooden surfaces, screw the camera directly to the surface. For masonry surfaces (bricks or concrete) you'll need to use the wall plug.

To control the PTZ camera, use the mouse and click the channel the camera is connected to. Click the "PTZ" button on the camera toolbar. Appearing on-screen is the PTZ controls –



- 1) Click the directional buttons to move the camera in the direction selected.
- 2) This determines how fast the camera will move.
- 3) The ability to zoom into an object and to control the level of focus (the "Iris" controls are not available).

Limited Warranty - Terms & Conditions

Swann Communications warrants this product against defects in workmanship and material for a period of one (1) year from its original purchase date. You must present your receipt as proof of purchase for warranty validation. Any unit which proves defective during the stated period will be repaired without charge for parts or labour or replaced at the sole discretion of Swann. The end user is responsible for all freight charges incurred to send the product to Swann's repair centres. The end user is responsible for all shipping costs incurred when shipping from and to any country other than the country of origin.

The warranty does not cover any incidental, accidental or consequential damages arising from the use of or the inability to use this product. Any costs associated with the fitting or removal of this product by a tradesman or other person or any

other costs associated with its use are the responsibility of the end user. This warranty applies to the original purchaser of the product only and is not transferable to any third party. Unauthorized end user or third party modifications to any component will render all warranties void. By law some countries do not allow limitations on certain exclusions in this warranty. Where applicable by local laws, regulations and legal rights will take precedence.

For Australia: Our goods come with guarantees which cannot be excluded under Australian Consumer Law. You are entitled to a replacement or refund for a major failure and for compensation for any other reasonably foreseeable loss or damage. You are also entitled to have the goods repaired or replaced if the goods fail to be of acceptable quality.

FCC Verification

This equipment has been tested and found to comply with the limits for Class B digital device, pursuant to part 15 of the FCC Rules. These limits are designed to provide reasonable protection against harmful interference in a residential installation. This equipment generates, uses and can radiate radio frequency energy and, if not installed and used in accordance with the instructions, may cause harmful interference to radio or television reception, which can be determined by turning the equipment off and on, the user is encouraged to try to correct the interference by one or more of the following measures:

- Reorient or relocate the receiving antenna
- Increase the separation between the equipment and the receiver
- Connect the equipment into an outlet on a circuit different from that to which the receiver is connected
- Consult the dealer or an experienced radio/TV technician for help

These devices comply with part 15 of the FCC Rules. Operation is subject to the following two conditions:

(1) These devices may not cause harmful interference.

(2) These devices must accept any interference received, including interference that may cause undesired operation.

Helpdesk/Technical Support

Technical Support E-mail: tech@swann.com

Telephone Helpdesk

USA Toll Free 1-800-627-2799

USA Parts & Warranty 1-800-627-2799

(M-F, 9am-5pm US PT)

AUSTRALIA 1800 788 210

NEW ZEALAND Toll Free 0800 479 266

UK 0808 168 9031

